



Knitting Patterns for Sale
Lion Brand® Fishermen's Wool
Felted Snowflake Tote

Pattern Number: 80303AD



This festive tote is great for any season. Felting makes the bag strong, so use it as a purse, a grocery bag, or for storing your knitting and crochet supplies.

Knitting Patterns for Sale from Lion Brand Yarn Lion Brand® Fishermen's Wool Felted Snowflake Tote

Pattern Number: 80303AD

SKILL LEVEL: Experienced

SIZE: One Size

12 in. (30.5 cm) wide x 14 1/2 in. (37 cm) tall x 6 in. (15 cm) deep, after felting

CORRECTIONS: (applied Nov 4, 2008)

SIDE (make 2)

Rep Rows ~~1-13~~ 10-13 fifteen times, then rep Rows 10-11 once more. End off B.

MATERIALS

- 150-098 Lion Brand Fisherman's Wool Yarn: Natural
1 Ball (A)
- 150-126 Lion Brand Fishermen's Wool Yarn: Nature's Brown
1 Ball (B)
- Lion Brand Knitting Needles - Size 10.5 [6.5 mm]
- Lion Brand Stitch Holders
- Large-Eye Blunt Needles (Set of 6)
- Additional Materials
Spare needle size 10.5 (6.5 mm) or smaller
1 yd (1 m) grosgrain ribbon, 1 1/2 in. (3.5 cm) wide Sewing needle and thread
6 x 12 in. (15 x 30.5 cm) piece of template plastic or plastic canvas (optional)

GAUGE:

14 sts = 4 in. (10 cm) in Stockinette st (k on RS, p on WS) before felting and with 2 strands held together.

EXACT GAUGE IS NOT ESSENTIAL FOR THIS PROJECT.

BE SURE TO CHECK YOUR GAUGE. When you match the gauge in a pattern, your project will be the size specified in the pattern and the materials specified in the pattern will be sufficient. If it takes you less stitches and rows to make a 4 in. [10 cm] square, try using a smaller size hook or needles; if more stitches and rows, try a larger size hook or needles.

STITCH EXPLANATION:

3-Needle Bind Off - With RS together, hold in one hand 2 needles with equal number of sts on each. With 3rd needle, knit tog 1 st from each needle, *knit tog 1 st from each needle, pass first st worked over 2nd to bind off, repeat from * across. Cut working yarn and pull through last st to secure.

NOTES:

- 1) Bag is worked with 2 strands of yarn held together throughout. Wind each color yarn into 2 balls before beginning.
- 2) Carry colors not in use along WS of work. Pick up new color from under old color to twist yarns and prevent holes.
- 3) To follow chart, work RS rows from right to left and WS rows from left to right.
- 4) When working stripe portion of Side, carry unused color up WS of work.

FRONT

Beginning at top edge, with 2 strands of A, cast on 50 sts.

Row 1: Sl 1 purlwise, *k1, p1, rep from * to last st, k1.

Rows 2-8: Rep Row 1.

Row 9 (RS): Sl 1 purlwise, inc 1 st in next st, k to end of row.

Join 2 strands of B, and work Chart Rows 10-60.

When chart has been completed, fasten off B.

With 2 strands of A only, work Chart Rows 61-74.

Sl sts to a holder.

BACK

Work same as Front, but do not sl sts to holder. When Chart Row 74 has been completed, join Back to Front with 3-needle bind off.

SIDE (make 2)

Beginning at top edge, with 2 strands of A, cast on 24 sts.

Rows 1-8: Sl 1 purlwise, *k1, p1, rep from * to last st, k1.

Row 9 (RS): Knit.

Join 2 strands of B, but do not end off A.

Row 10: With B, p11, k2, p11.

Row 11: With B, k11, p2, k11.

Row 12: With A, p11, k2, p11.

Row 13: With A, k11, p2, k11.

Rep Rows 10-13 fifteen times, then rep Rows 10-11 once more. End off B.

With A, purl 1 row.

Next Row (RS): With A, purl (foldline).

Next Row: With A, p2tog, p to last 2 sts, p2tog.

Next Row: With A, k2tog, k to last 2 sts, k2tog.

Rep last 2 rows until 2 sts remain. Bind off.

HANDLE (make 2)

With 2 strands of A, cast on 2 sts.

Rows 1 and 3 (RS): Inc 1 in first st, k1b to last st, inc 1 in last st.

Rows 2 and 4: Inc 1 in first st, purl to last st, inc 1 in last st - 8 sts at the end of Row 4.

Row 5: Sl 1 purlwise, k1b across.

Row 6: Sl 1 purlwise, purl across.

Rep Rows 5 and 6 until piece measures about 19 in. (48.5 cm) from beg, end with a WS row.

Next Row: K2tog, k1b to last 2 sts, k2tog.

Next Row: P2tog, p to last 2 sts, p2tog.

Rep last 2 rows until 2 sts remain.

Bind off.

FINISHING

Matching ribbed top edges, sew Sides between Back and Front. Sew shaped end of Side to bottom of Bag.

Pin one Handle to Front, with each end of Handle 2 in. (5 cm) from side edge of Front, and with shaped ends of Handle just below ribbed top edge of Bag. Sew securely to Front. Rep with second Handle on Back of Bag. Weave in ends.

Felting

Wash by machine on a hot wash/cold rinse cycle with detergent and several pieces of clothing to agitate.

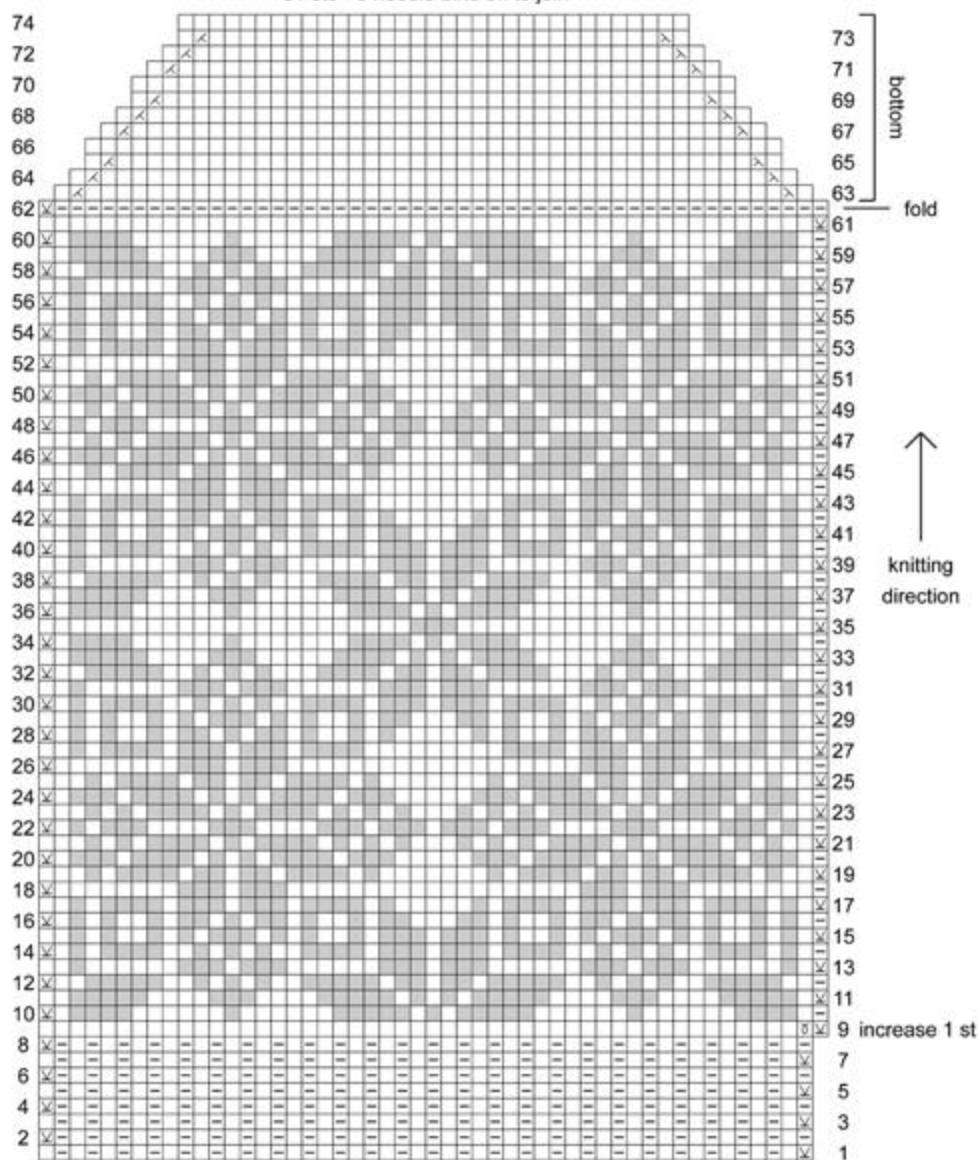
Keep checking felting progress and remove from machine when very lightly felted. Pull into shape and allow to dry.

By hand, sew ribbon inside Bag, just below top edge to prevent ribbed edge from stretching.

If desired, insert plastic into Bag to create a rigid bottom.

Front & Back Panel

31 sts - 3 needle bind off to join



- With A, K on RS, p on WS
- With B, K on RS, p on WS
- P on RS, k on WS
- K2tog on RS, p2tog on WS
- Ssk on RS, p2tog tbl on WS
- Sl 1 purwise
- M1

ABBREVIATIONS / REFERENCES	
Click for explanation and illustration	
<u>inc = increas(e)(s)(ing)</u>	<u>k = knit</u>
<u>k1b = knit through the back loop</u>	<u>k2tog = knit 2 together</u>
<u>p = purl</u>	<u>p2tog = purl 2 together</u>
<u>rep = repeat(s)(ing)</u>	<u>sl = slip</u>
<u>st(s) = stitch(es)</u>	

Learn to knit instructions: [**http://learnToKnit.LionBrand.com**](http://learnToKnit.LionBrand.com)

Every effort has been made to have the knitting and crochet instructions accurate and complete. We cannot be responsible for variance of individual knitters and crocheters, human errors, or typographical mistakes.

We want your project to be a success! If you need help with this or any other Lion Brand pattern, e-mail support is available 7 days per week. Just click [here](#) to explain your problem and someone will help you!

For hundreds of free patterns, visit our website www.LionBrand.com

To order visit our website www.e-yarn.com or call: (800) 258-YARN (9276) any time!

Copyright ©1998-2005 Lion Brand Yarn Company, all rights reserved. No pattern or other material may be reproduced -- mechanically, electronically, or by any other means, including photocopying -- without written permission of Lion Brand Yarn Company. If you would like to send a copy of this page to someone, click [here](#) and we will be happy to do it for you.